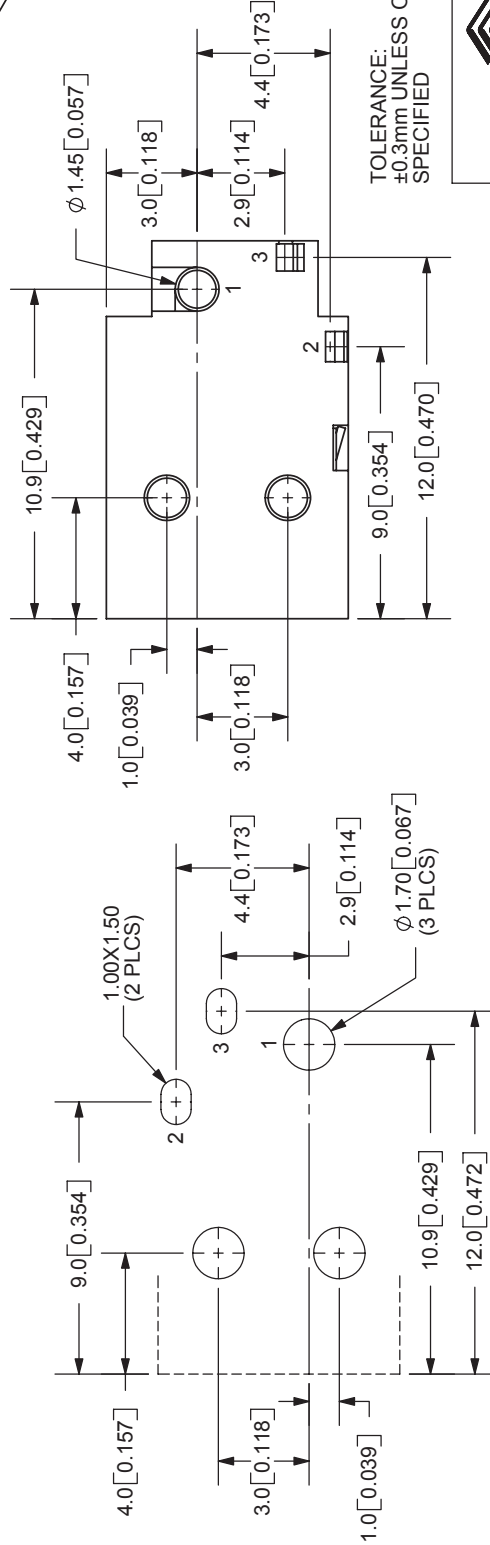
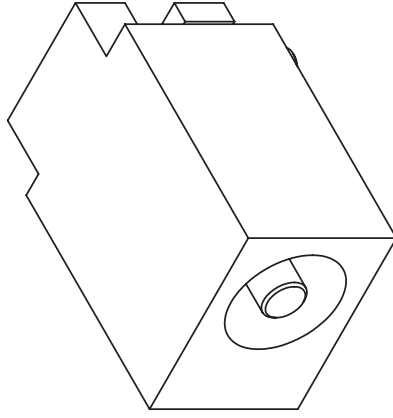
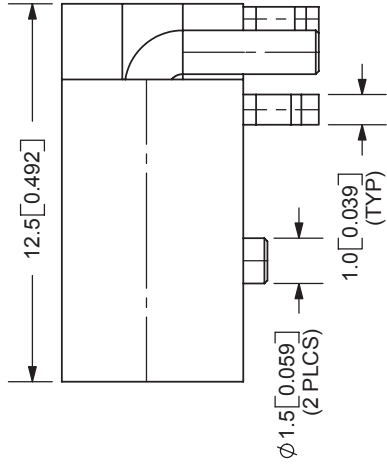
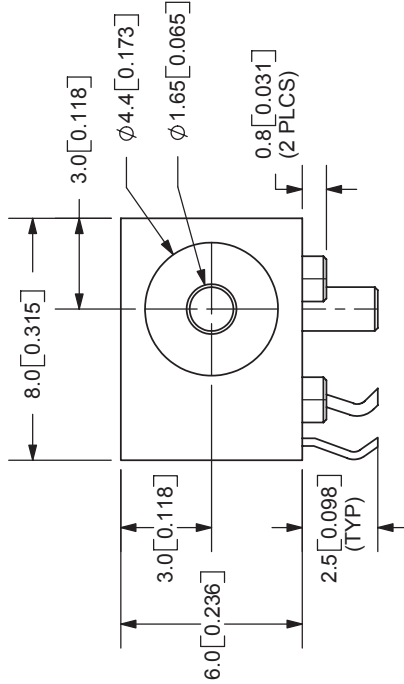
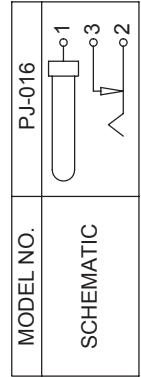


| | | |
|-----------|----------------------------|-------------------|
| REV. A | DESCRIPTION NEW DRAWING | DATE 5/17/2006 |
|-----------|----------------------------|-------------------|



PCB LAYOUT
TOP VIEW



| | |
|----------------------------|--------|
| MODEL NO. | PJ-016 |
| SCHEMATIC | |
| CENTER PIN DIAMETER 1.65mm | |

SPECIFICATIONS:
 RATING: 12V DC @ 1A
 CONTACT RESISTANCE: 30m OHMS MAX
 INSULATION RESISTANCE: 100M OHMS MIN: 500V DC
 VOLTAGE WITHSTAND: 500V AC R.M.S. FOR 1 MINUTE
 LIFE: 5,000 CYCLES
 OPERATING TEMP: -20° ~ +85°C

TOLERANCE:
 ±0.3mm UNLESS OTHERWISE
 SPECIFIED



9615 SW Allen Blvd., Ste. 103
 Beaverton, OR 97005
 Phone: 503-643-4899
 800-275-4899
 Fax: 503-372-1266
 Website: www.cui.com

| CENTER PIN | MATERIAL | PLATING |
|------------|-----------------|---------|
| TERMINAL 1 | Brass | Silver |
| TERMINAL 2 | Brass | Silver |
| TERMINAL 3 | Phosphor Bronze | Silver |
| HOUSING | Brass | Silver |
| | PBT | |

| | | | |
|-----------|---------------|--------------|-------------|
| TITLE: | DC POWER JACK | REV: | A |
| PART NO: | PJ-016 | UNITS: | MM [INCHES] |
| DRAWN BY: | ZRJ | APPROVED BY: | |
| | | SCALE: | 4:1 |